

Food Waste and new NDCs: Why food waste mitigation can help tackling the climate crisis?

Carolina Urmeneta

Waste & Circular Economy Program Director

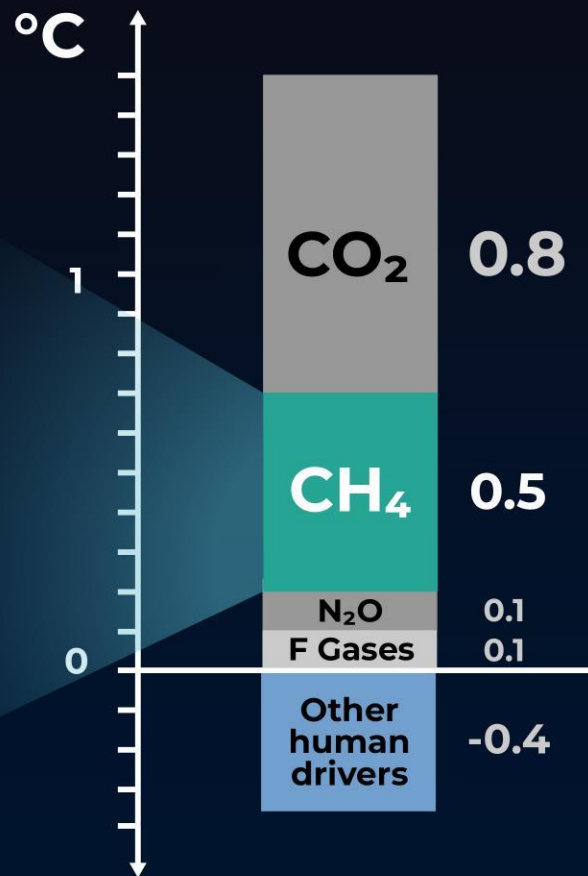
carolina.Urmeneta@globalmethanehub.org

GLOBAL METHANE HUB



CH₄ has
contributed
to 45% of
recent net
warming

IPCC AR6 report.



60% of methane
comes from



**Food
production**



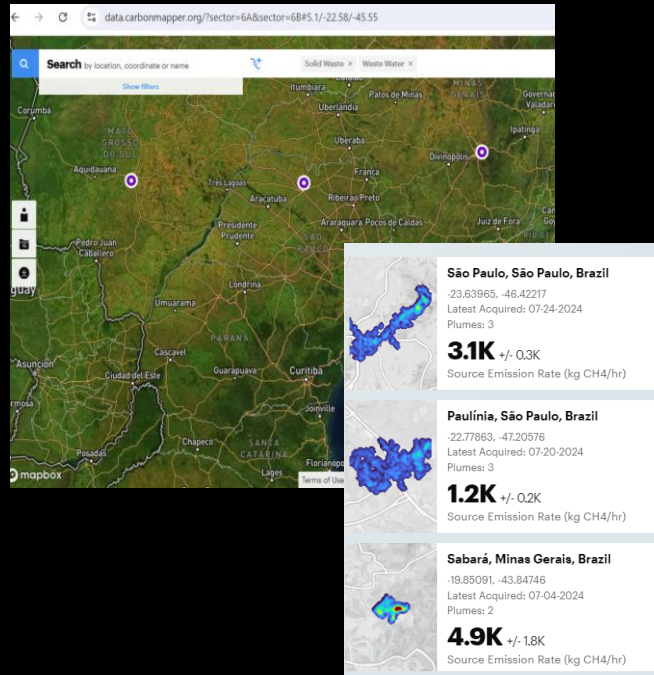
**Food
waste**

A NEW ERA METHANE ACCOUNTABILITY

Carbon Mapper, MethaneSAT, GHG Sat&SRON are working together to increase coverage and public access.

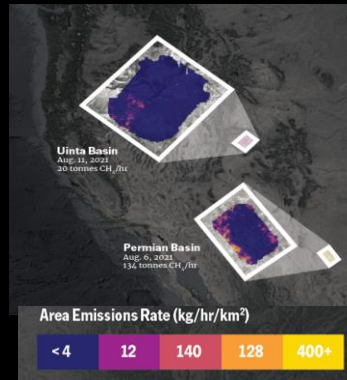
Carbon Mapper

Facility-Level Plume Identification



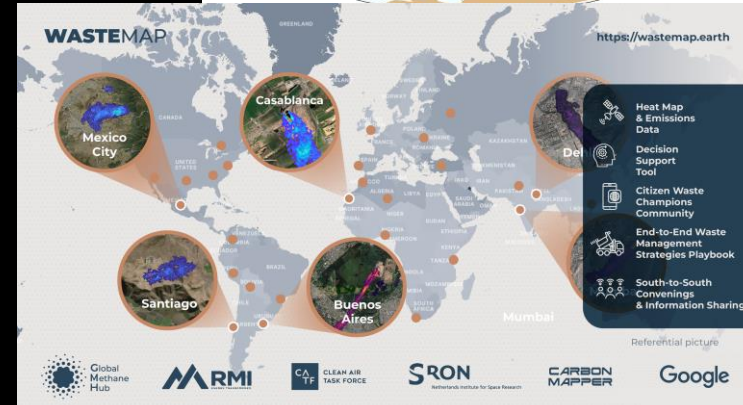
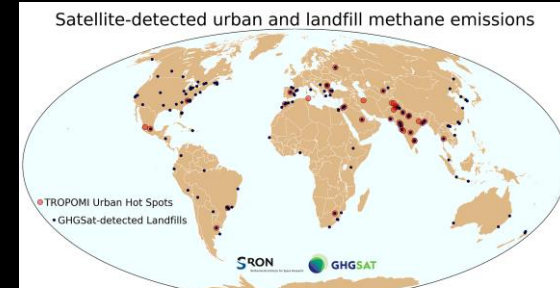
MethaneSAT

Regional-Level Emissions Quantification



GHGSAT & SRON

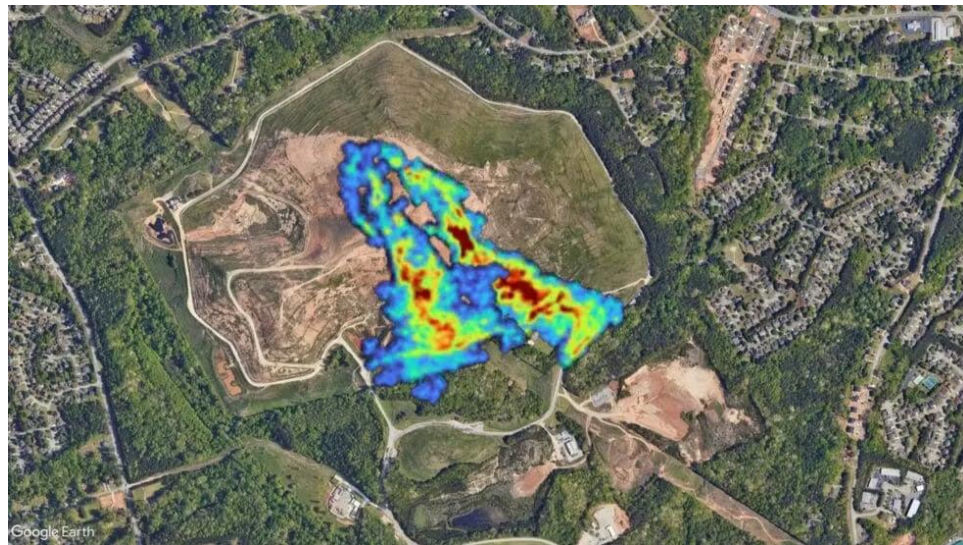
Facility – Level Plume



NEW ERA OF ACCOUNTABILITY

> 50% of landfills had observable methane emission point sources compared to the 0.2% to 1% of "super-emitter" sites in the oil and gas sector

*Super emitters are sources that spew at least 100 kilograms (100 lbs) of methane per hour (EPA)



Ineffective landfill gas management, >60% of the methane is released as fugitive emissions (EPA)

Food Loss and Waste (FLW) in LAC

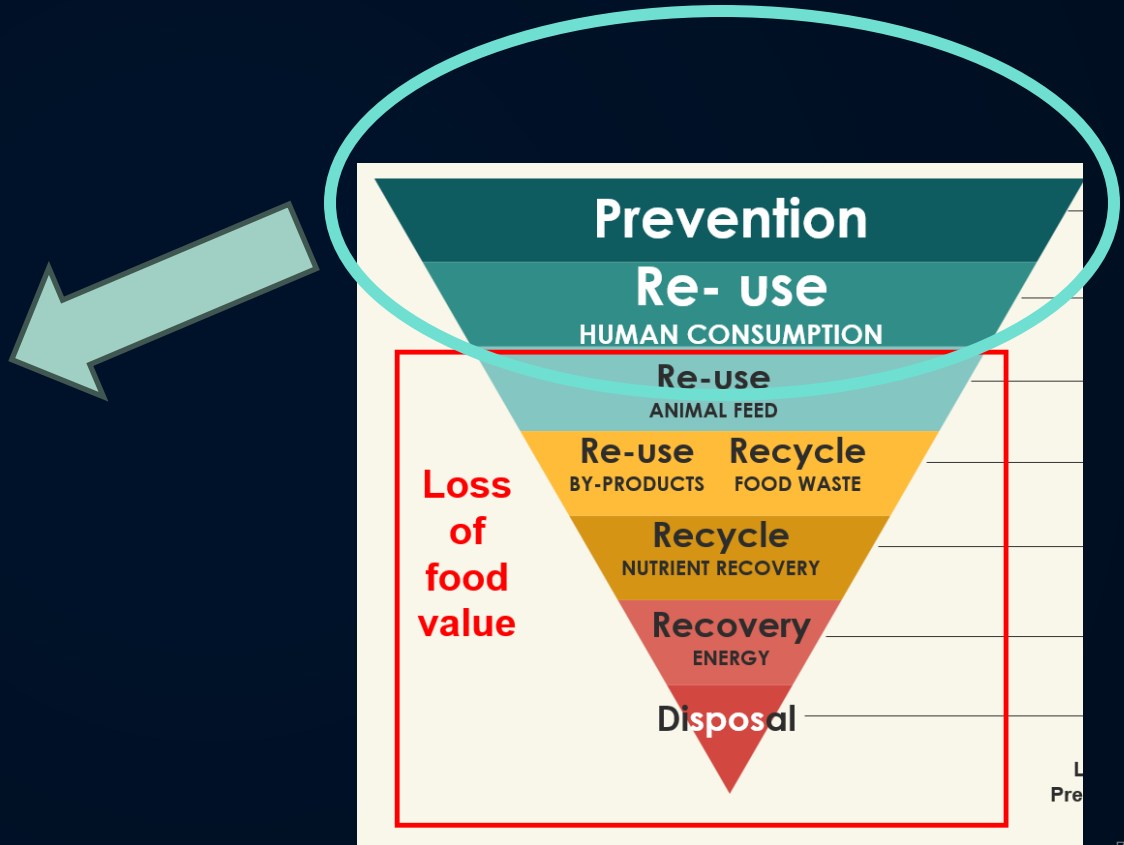
- 60 million people in LAC suffer from severe food insecurity
- 12% of total food production is lost each year (production, transport, and processing). 220 million tons.
- Another 17% is wasted between marketing and consumption.



Food Loss and Waste Hierarchy

Recovery and re-distribution:

- Food Banks Methane mitigation?
- Climate change mitigation action?



Food Recovery to Avoid Methane Emissions (FRAME) Methodology

METHANE MITIGATION & CO BENEFITS

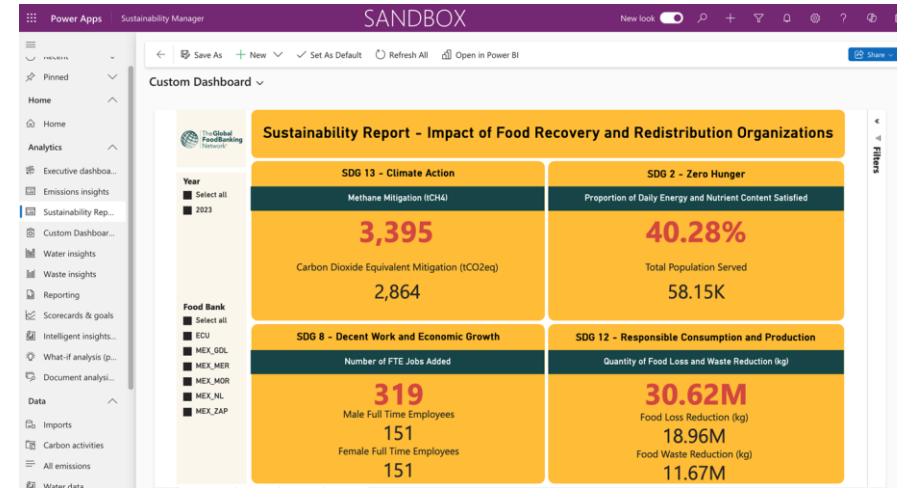
- Methodology and Open Platform (Gold Standard, Carbon Trust, EnergyLAB, and PIMCO, Microsoft)
- Will enable food banks access to economic instruments and climate change instruments/tools.

DATA & CAPACITY BUILDING: FOOD RECOVERY

- **Ecuador:** 64% increase of food recovery and 24% increase of beneficiaries (>135k people).
- **Mexico:** 43% increase in served beneficiaries totaling 1.7 million (23% of total food rescued by GFN)

POLICY AND REGULATION, Food Donation Atlas

Policy guidance to inform the model global scale-up partnering with Harvard.



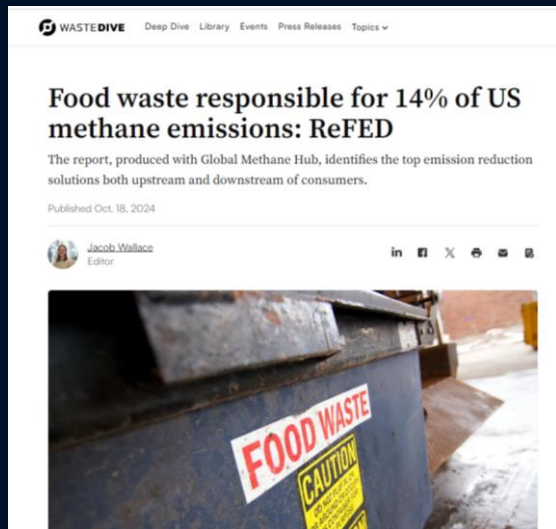
Pilot: 3 months, 7,558 tons recovered, 6 food banks.



Next steps, Unify, Amplify, and Accelerate the progress being made

Climate change agenda:

- COP29, BTR (Biennial transparency reports)
- **COP30, new NDC (National Determined Contribution)**



Environmental Justice Values and Principles for FLW



(1) Respect planetary boundaries to ensure intergenerational equity (Ecological limits + waste hierarchy)

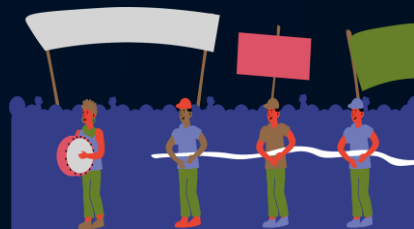
(2) Respect for all waste pickers and waste workers
- (human rights, equity and justice)

(3) Enhance inclusion and build from local knowledge
- (meaningful participation)

(4) Respond to pollution and environmental harm with accountability (compensate for damages and prevent further harm)

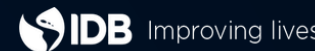
(5) Apply a systemic perspective to find holistic solutions
- (exceeding SDGs and climate targets)

To be considered
for Climate
Mitigation Action
Plans, new NDCs,
and LTS.



Catalytic support for methane mitigation from Waste in LAC

- **IDB Waste portfolio committed to at least 30% methane mitigation.**
- Methodology for measuring and tracking methane emissions.
- Cost-recovery instruments and financial strategies.
- Capacity building and knowledge dissemination.
- The initiative **leverages at least \$360m for project implementation** by aligning IDB's waste portfolio with the Global Methane Pledge, **starting in Argentina, Dominican Rep and Ecuador.**



LOW Methane Partnership

(lowering organic waste)

VISION: 40 subnational jurisdictions unlocking \$10 billion to cut at least 1 million tonnes/yr of methane well before 2030.

JURISDICTIONS

National governments

Nigeria, Chile, Dominican Republic, Indonesia, others

Subnational jurisdictions

Lagos, Santiago, RIO DE JANEIRO, Santo Domingo,

JURISDICTION COMMITMENTS

- ✓ **Methane target:** Declare a waste methane reduction target
- ✓ **Multi-level approach:** Commit to a multi-level approach
- ✓ **Partnership:** Commit to work with LOW-Methane partners

PARTNER SUPPORT

from governments, multilaterals, NGOs, philanthropies, and private sector

- ✓ **Data & Transparency**
- ✓ **Finance**
- ✓ **Technical Capacity**
- ✓ **Policy**



**Cutting methane emissions is the fastest, most
effective way to reduce the rate of global
warming and contribute to limiting
temperature rise to 1,5°C**

**NEW NDCS: OPPORTUNITY TO COMMIT
TARGETS AND ACTIONS TO REDUCE FLW AND
METHANE EMISSIONS**