



The Council for Agricultural Research and Economics



Prof. Stefania De Pascale
Vice-President

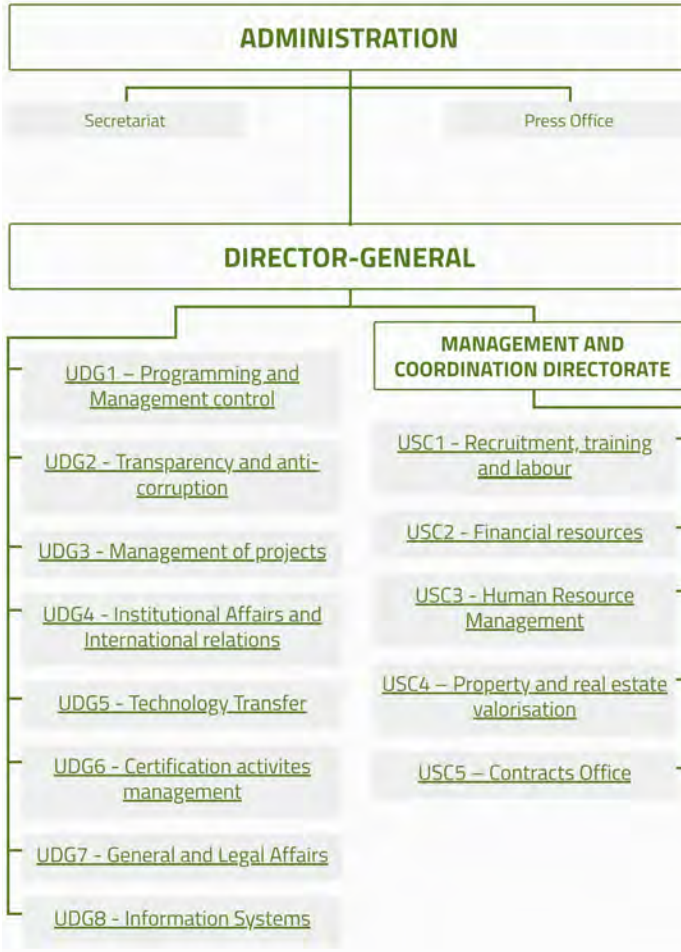
10th Meeting of G20 Agricultural Chief Scientists (MACS-G20)
Virtual meeting - Italy - 15-16 June 2020



About us



President
Prof. Carlo Gaudio



Director-General
Dr. Stefano Vaccari

We are the leading Italian research organization dedicated to agriculture and agri-food.

We operate as a legal entity under public law, and are supervised by the Ministry of Agricultural, Food and Forestry Policies (Mipaaf).

We have full scientific, statutory, organizational, administrative and financial autonomy.



Our history

In **1850** the Ministry of Agriculture and Trade of the Kingdom of Sardinia was formed

In **1866**, with a project by the first Minister Camillo Benso Count of Cavour, agricultural meetings were established in each provincial capital, with the obligation to create and maintain *itinerant agricultural chairs*

From **1870** onwards, agricultural experimental stations were set up in all Country

On 5 June **1930**, all the experimental stations were placed under the aegis of the Ministry of Agriculture

In **2005** the Council for Research and Experimentation in Agriculture – CRA was established

In **2012** the CRA brought together the National Research Institute for Food and Nutrition - INRAN

On 1 January **2015** the Council for Agricultural Research and Economics – CREA was created by merging of CRA and INEA (The National Institute of Agricultural Economics)



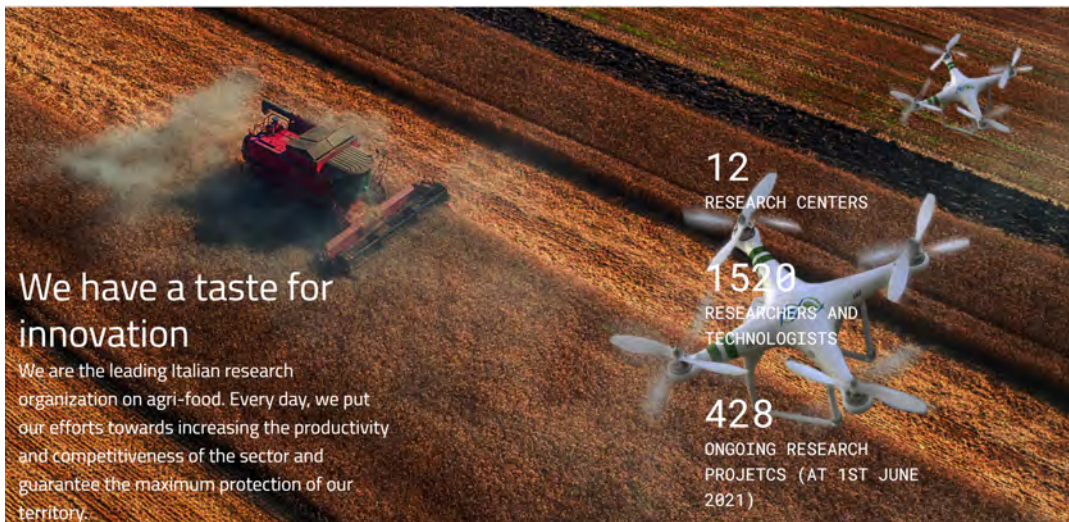
Our organization

Our organization foresees **12** research centers (6 related to specific supply chains and 6 dedicated to horizontal topics) which are forming a capillary network of structures throughout the country.

Our scientific activity covers agricultural crops, livestock, fishery, forestry, agri-industry, food science and socio-economics.

We employ over **2000** people, half of whom are researchers and technologists.

We own several experimental farms and fields.





Supply chain research centres

Specific supply missions are assigned to the Supply Chain Centers for the valorization of typical quality Italian productions and for the sustainable management of forests and wood arboriculture.

1. Animal Production and Aquaculture
2. Cereal and Industrial Crops
3. Forestry and Wood
4. Olive, Fruit and Citrus Crops
5. Vegetable and Ornamental Crops
6. Viticulture and Enology



RESEARCH CENTRE FOR ANIMAL PRODUCTION AND AQUACULTURE



RESEARCH CENTRE FOR FORESTRY AND WOOD



RESEARCH CENTRE FOR CEREAL AND INDUSTRIAL CROPS



RESEARCH CENTRE FOR VITICULTURE AND ENOLOGY



RESEARCH CENTRE FOR VEGETABLE AND ORNAMENTAL CROPS



RESEARCH CENTRE FOR OLIVE, FRUIT AND CITRUS CROPS



Transversal centers

These Centers lead missions related to **transversal disciplines** in agriculture, concerning the agri-food sector and agri-industry, food and nutrition, as well as European and national agricultural policies.



RESEARCH CENTRE FOR GENOMICS AND BIOINFORMATICS



RESEARCH CENTRE FOR AGRICULTURE AND ENVIRONMENT



RESEARCH CENTRE FOR PLANT PROTECTION AND CERTIFICATION



RESEARCH CENTRE FOR ENGINEERING AND AGRO-FOOD PROCESSING



RESEARCH CENTRE FOR FOOD AND NUTRITION



RESEARCH CENTRE FOR AGRICULTURAL POLICIES AND BIOECONOMY

1. Agricultural Policies and Bioeconomy
2. Agriculture and Environment
3. Engineering and Agri-Food Processing
4. Food and Nutrition
5. Genomics and Bioinformatics
6. Plant Protection and Certification



Our commitment

To deal with the great challenges of the twenty-first century related to food production sustainability, following the principles of the circular, bio-based economy through a multidisciplinary approach that includes innovation transfer.

Our know-how ranges from genetics and physiology to mechanics and robotics; from innovative techniques for the management of sustainable productions, including practices to improve soil fertility and plant protection, to silviculture, under natural and cultivated ecosystems, and livestock farming; from agri-food industry processes to the nutritional properties of foods and dietary aspects as well as consumer protection and education and waste reduction.



Challenges

Agriculture is expected to provide food for a growing population, using natural resources more sustainably, preserving land, water and biodiversity and meeting the challenge of climate change.

Despite agricultural productivity improvements, farmers must cope with water scarcity, soil degradation, ecosystem stress, and biodiversity loss, climate change and the high costs of agricultural inputs.

CREA intends to make its contribution in this regard, with major research projects, able to radically innovate the way of farming in such a difficult context and **capable of producing scientific knowledge, which will increase competitiveness, production efficiency and sustainability of our agricultural system, helping to adapt to climate change and improving food security and safety.**

CREA is ready to contribute to the today international debate on challenges and opportunities of **digital traceability** systems implementation and on the implications of **new breeding techniques** application in agriculture for sustainable development.



Follow Us    



CREA

Council for Agricultural Research and Economics



Headquarters

Via Po, 14 - 00198 Roma
Partita IVA 08183101008
C.F.: 97231970589

Contacts

tel. + 39 06 478361
fax. + 39 06 47836320
email crea@crea.gov.it
PEC crea@pec.crea.gov.it

URP - Office of Public Relations

tel. + 39 06 47836685
Do you need more information?

I wish you a successful and fruitful meeting
Thank you very much for your attention!