



Biotechnology and
Biological Sciences
Research Council

G20 MACS Technical Workshop on Climate Change

Tim Willis UKRI-BBSRC

BBSRC Agriculture and Food

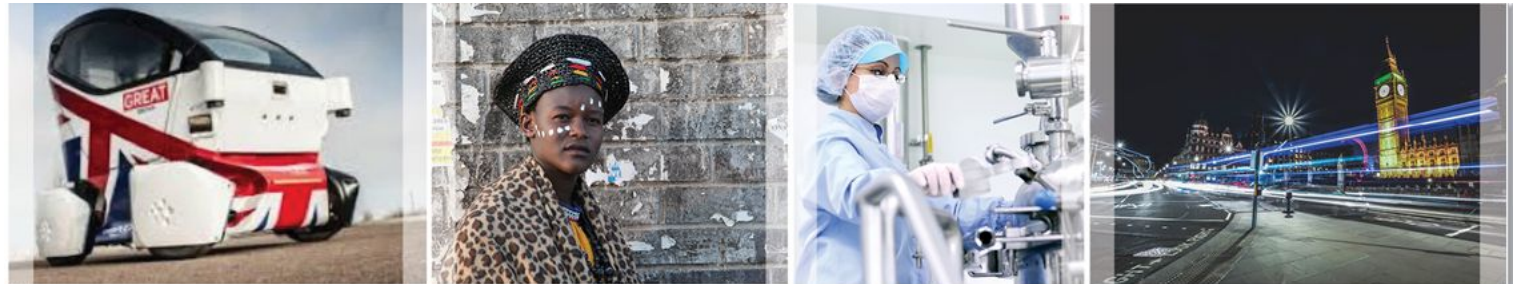


UK Research and Innovation

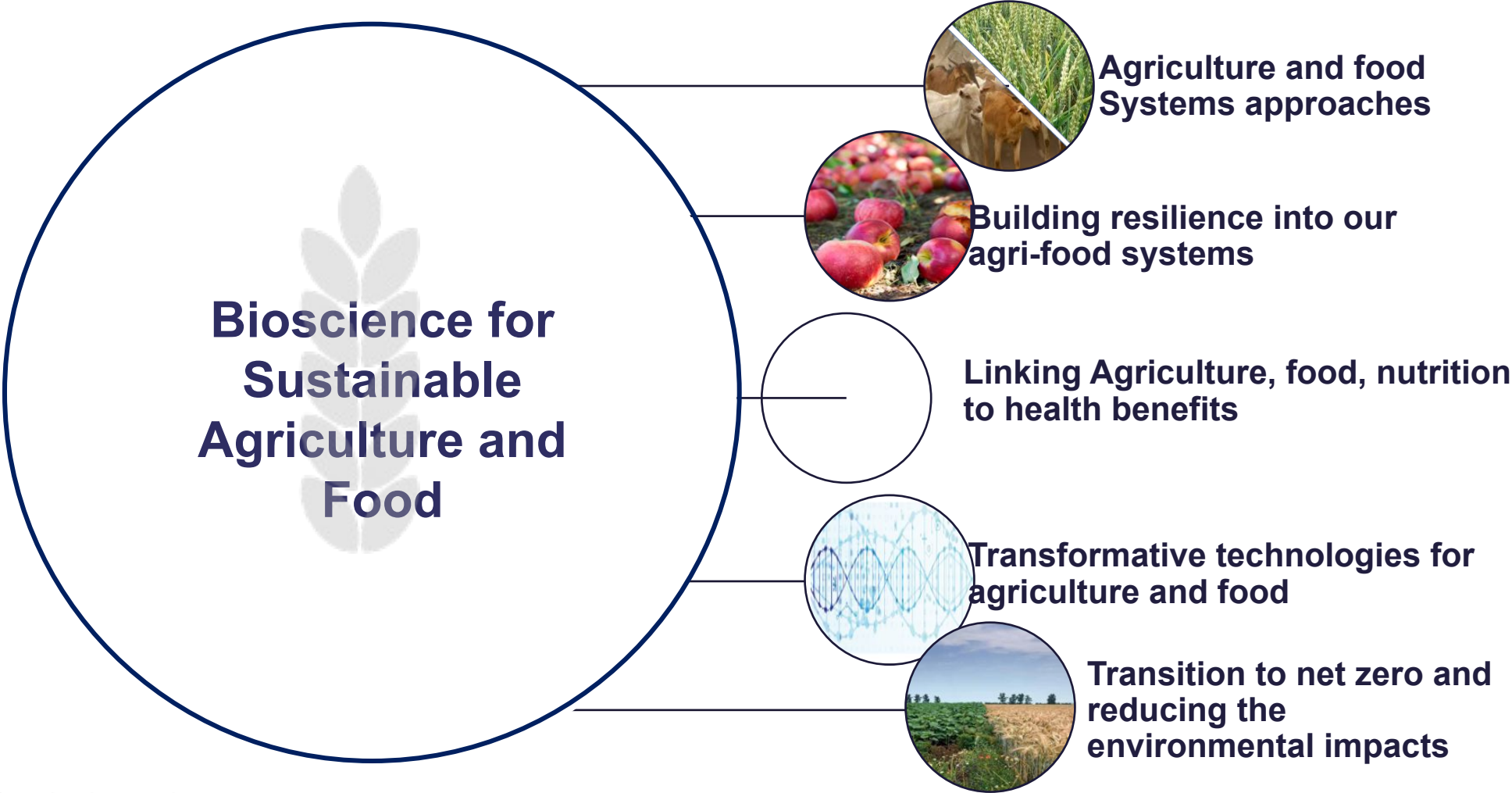
UK Research and Innovation,
was launched in April 2018.

It brings together the seven UK
research councils, Innovate UK
and Research England

UKRI convenes, catalyses and
invests in close collaboration
with others to build a thriving,
inclusive research and
innovation system.



Bioscience for Sustainable Agriculture and Food Research and Innovation priorities



BBSRC areas of interest for Net Zero



Biotechnology and
Biological Sciences
Research Council

BBSRC has committed to net zero, agriculture and biodiversity

Plant Pathogen Resistance: a leading-edge national strategic investment to provide solutions to a range of plant disease threats.

Soil health: a key, integrating component of sustainable and resilient agri-systems.

Agri-environment: combining skills, data, models and resources in a deeper integrated way.

Deep dive into UKRI portfolio on food: To understand our portfolio of investments, identify any areas of duplication, opportunities for collaboration and consider how coordination can best be achieved.

Food loss & quality network: strengthen UK capability and capacity in a key route for the reduction of food waste.

Greenhouse Gas Removal demonstrators programme: to assess sustainable routes for large scale removal of greenhouse gases from the atmosphere.

Future Farming for Climate Change: research and innovation that delivers net zero emissions agriculture and future farming for climate change

'One-Health' approaches: address health challenges relevant to animal and humans in the context of climate change e.g. zoonoses and vector-borne diseases future look.

Transforming UK Food Systems: programme placing healthy people and a healthy natural environment at its centre.

Network to research sustainable agri-food for net zero launched July 2022

BBSRC, EPSRC, NERC, ESRC £5M Network Plus to:

- Focus on improving the sustainability of the agri-food system to reduce greenhouse gas emissions
- Build new interdisciplinary partnerships across the UKRI portfolio
- Be informed by stakeholders including manufacturing, retail, consumption, waste management
- Develop plans for future research and innovation.



Molecules to Landscapes: A phased programme



Interdisciplinary research to identify beneficial agroecological practices.



To identify practices which come at a detriment to the wider landscape



To Integrate data sciences with molecular biological, ecological and agricultural perspectives.



Better understanding of processes that drive biodiversity loss, greenhouse gas emissions and nutrient cycling.



Development and application of biosensors, tools and technologies, to improved agroecological practices at a landscape level.



Stimulation and coordination of an integrative research community bringing novel approaches to meet the challenges within this area.



Biotechnology and
Biological Sciences
Research Council



Natural
Environment
Research Council

BBSRC International Activity



- **Bottom-up international collaborations**

BBSRC International Schemes: International Partnering Awards, Workshops, Travel Awards

- **Multilateral Global and transnational programmes**



